

LANGUAGE IN PRACTICE

Inflections for Temporal Aspect

Some verbs in ASL may be inflected for various purposes, i.e., to show who did what to whom, to show how something is moved from one location to another, or to show manner of movement. Inflections involve a change in the movement of the sign. The type of inflection discussed here is for temporal aspect, and shows the *frequency or duration of action* represented by the verb. If, for example, you want to complain about your health or an on-going personal problem, you would most likely inflect the verb sign to indicate how frequently or how long the problem has occurred.*

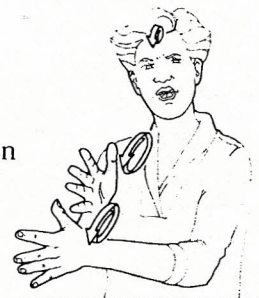
If a problem, activity or situation has occurred only once, use the **uninflected** form, which is the basic form of the verb with its basic movement. This is an example of an uninflected verb.



If a problem, activity or situation occurs frequently or regularly (several times a day, every day, every Monday), use **recurring inflection** by signing the verb with several repetitions. This is an illustration of the same verb signed with recurring inflection.



If a problem, activity or situation has occurred continuously with little interruption (for the whole hour, all morning, all week long), use **continuous inflection** by signing the verb with a repeated circular movement. This illustration shows the same verb signed with continuous inflection.



*Not all verbs can be inflected. Many of the verbs in the category "Complaints about" in the Vocabulary Review section at the end of this unit are examples of temporal aspect inflections.